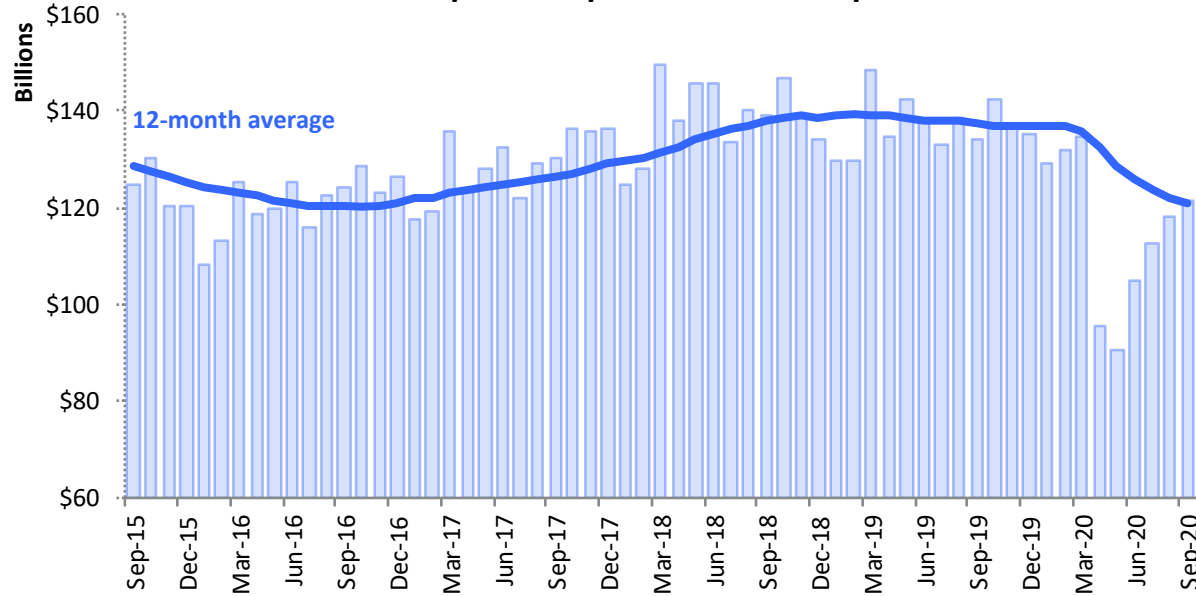


# U.S. EXPORTS FACT SHEET (SEPTEMBER 2020)

## GOODS

### Total U.S. Goods Exports: September 2015-September 2020



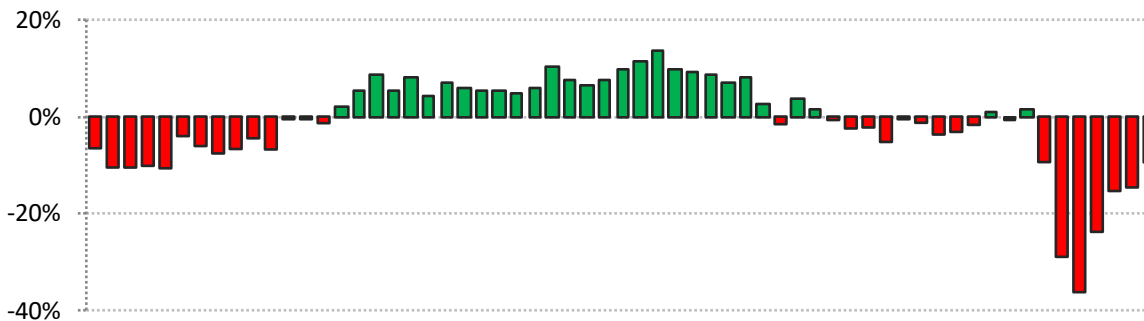
### Monthly Exports

Exports (9/20): \$121.5B  
 Exports (9/19): \$134.2B  
 Exports (9/18): \$139.3B  
 1-Year Change (from 9/19): **-9.5%**  
 2-Year Change (from 9/18): **-12.8%**

### Top Export Sectors (\$B)

	9/20	9/19	Change
Oil & gas:	6.5	8.1	<b>-19.8%</b>
Aerospace products:	6.3	12.1	<b>-48.3%</b>
Pharmaceuticals:	5.9	5.5	<b>+6.9%</b>
Motor vehicles:	5.5	5.7	<b>-4.0%</b>
Semiconductors:	5.0	5.0	<b>+0.6%</b>

### U.S. Goods Exports, Year-Over-Year Change



### Top Markets (\$B)

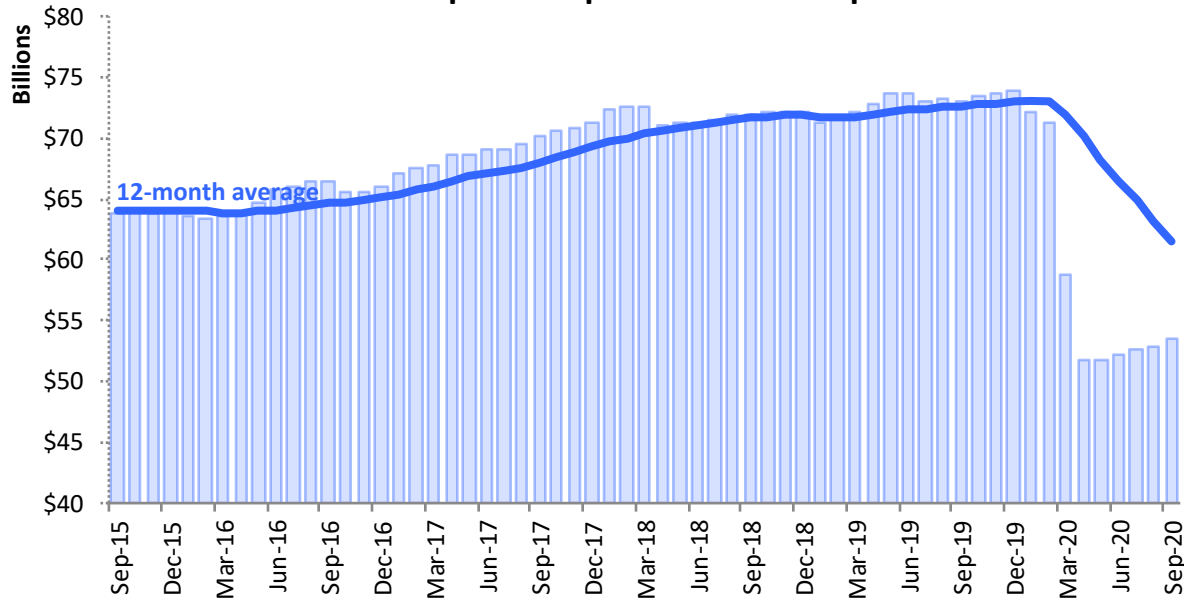
	9/20	9/19	Change
Canada:	23.3	24.3	<b>-4.1%</b>
Mexico:	18.7	20.7	<b>-9.4%</b>
China:	11.5	8.6	<b>+34.2%</b>
Germany:	5.5	5.5	<b>+0.1%</b>
United Kingdom:	5.0	5.9	<b>-14.2%</b>

Source: The Trade Partnership from U.S. Census Bureau data

# U.S. EXPORTS FACT SHEET (SEPTEMBER 2020)

## SERVICES

### Total U.S. Services Exports: September 2015-September 2020



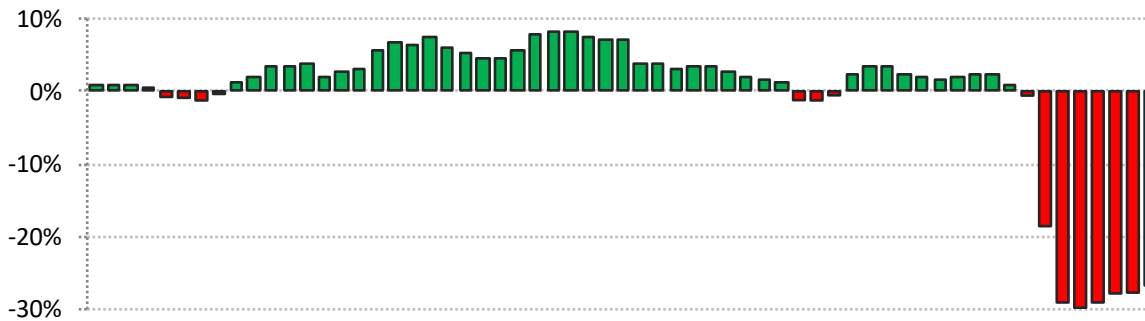
### Monthly Exports

Exports (9/20):	\$53.6B
Exports (9/19):	\$73.1B
Exports (9/18):	\$72.0B
1-Year Change (from 9/19):	<b>-26.7%</b>
2-Year Change (from 9/18):	<b>-25.6%</b>

### Top Export Sectors (\$B)

	<u>9/20</u>	<u>9/19</u>	<u>Change</u>
Business Services:	15.1	16.0	<b>-5.9%</b>
Financial Services:	11.0	11.1	<b>-1.2%</b>
Royalties from IP:	8.9	9.8	<b>-9.3%</b>
Telecom & info services:	4.4	4.7	<b>-8.0%</b>
Transportation services:	4.2	7.4	<b>-43.4%</b>

### U.S. Services Exports, Year-Over-Year Change



### Top Markets (\$B)

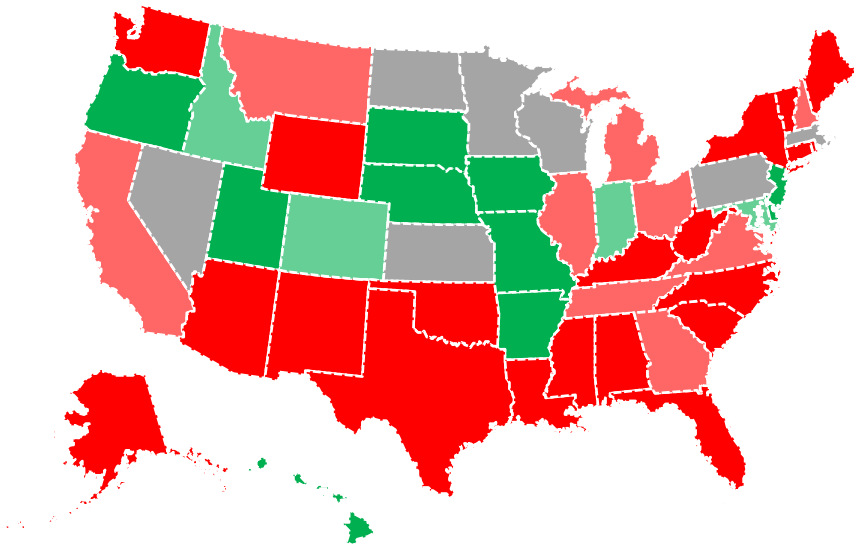
	<u>Q2/20</u>	<u>Q2/19</u>	<u>Change</u>
United Kingdom:	13.8	20.1	<b>-31.5%</b>
Canada:	10.5	16.6	<b>-36.8%</b>
Japan:	9.1	12.5	<b>-27.5%</b>
China:	8.1	14.3	<b>-43.5%</b>
Germany:	6.0	9.1	<b>-33.5%</b>

Source: The Trade Partnership from U.S. Bureau of Economic Analysis data

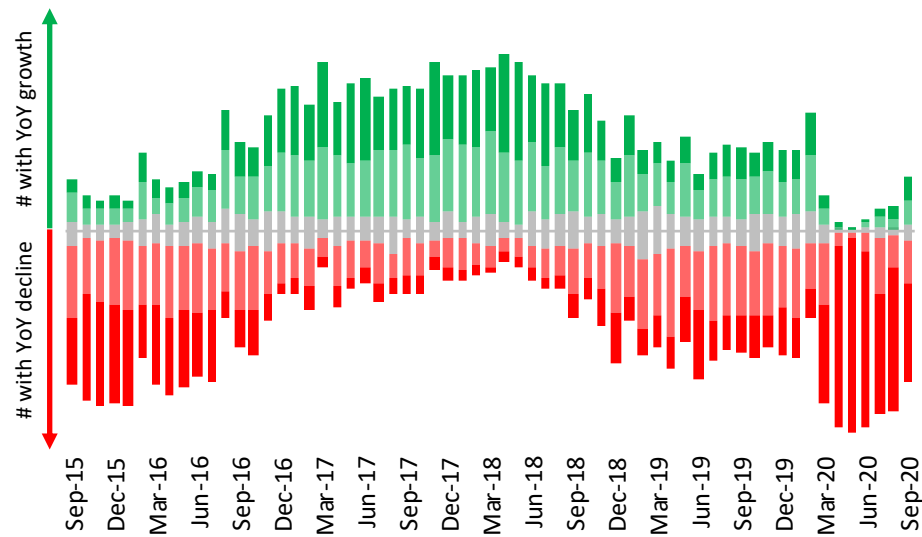
# U.S. EXPORTS FACT SHEET (SEPTEMBER 2020)

## STATE AND CONGRESSIONAL DISTRICT EXPORTS - GOODS

### Change in State Exports, Sept. 2020 vs Sept. 2019



### Annual Change in District Exports: Sept. 2015-Sept. 2020\*



- 10** States' exports grew by more than 10% in Sept. 2020  
Iowa's exports grew from \$1.09B in 2019 to \$1.38B in 2020
- 4** States' exports grew between 2% and 10% in Sept. 2020  
Indiana's exports from \$3.24B in 2019 to \$3.54B in 2020
- 7** States' exports were within 2% of 2019 in Sept. 2020  
Kansas' exports were \$1.1B in both 2019 and 2020
- 9** States' exports fell between 2% and 10% in Sept. 2020  
Montana's exports fell from \$199M in 2019 to \$182M in 2020.
- 20** States' exports fell by more than 10% in Sept. 2020  
Washington's exports fell from \$3.71B in 2019 to \$2.32B in 2020

- 53** Districts' exports grew by more than 10% in Sept. 2020  
IA-4's exports grew from \$331M in 2019 to \$477M in 2020
- 48** Districts' exports grew between 2% and 10% in Sept. 2020  
KY-1's exports grew from \$345M in 2019 to \$376M in 2020
- 37** Districts' exports were within 2% of 2019 in Sept. 2020  
UT-3's exports were \$130M in both 2019 and 2020
- 91** Districts' exports fell between 2% and 10% in Sept. 2020  
MI-11's exports fell from \$406M in 2019 to \$366M in 2020
- 206** Districts' exports fell by more than 10% in Sept. 2020  
AZ-3's exports fell from \$345M in 2019 to \$213M in 2020

Source: The Trade Partnership's CDExports database

\* Note: Each bar, representing all 435 Congressional Districts, is the same height.

# U.S. EXPORTS FACT SHEET (SEPTEMBER 2020)

## SOURCES AND CONTACT INFO

### About the Data

**National goods exports** data are “Total Exports” from the U.S. Census Bureau (“Census”), accessed through Census’ USA Trade Online database. Goods data are not seasonally adjusted. The 12-month average trendline helps show whether exports are rising or falling (e.g., it rises if the current month’s exports were higher than exports in the same month during the previous year, and vice versa). Sector-level data are at the 4-digit North American Industry Classification System (NAICS) level.

**National services exports** data are from the U.S. Bureau of Economic Analysis (BEA), accessed through BEA’s Interactive Data website. Services data are seasonally adjusted. The 12-month average trendline helps show whether exports are rising or falling (e.g., it rises if the current month’s exports were higher than exports in the same month during the previous year, and vice versa). Sector-level data are for the major BEA categories because more-detailed levels are not available monthly. Similarly, the country-level data are only available quarterly, so data reflect the most-recent quarter.

**State and congressional districts goods exports** data are from The Trade Partnership’s *CDxports* database. *CDxports* reports merchandise export estimates for more than 100 industries to 230 countries as well as services export estimates for more than 30 sectors to over 70 countries and regions for which the U.S. government publishes national export data. It is the only source for state exports of services and district exports of goods and services. *CDxports* improves upon U.S. government data, particularly by allocating bulk agricultural exports (e.g., soybeans, wheat) from port states to grower states. More information about *CDxports*, including detailed methodology, is available at: <https://tradepartnership.com/data/cdxports-and-cdxjobs/>

### About The Trade Partnership

**The Trade Partnership** was founded by Laura Baughman in 1991 to meet a need for a research firm that could apply economic analysis to produce clear, concise and useful information about the impacts of trade policies. Our office in Washington, DC offers locally based trade and economic research services that combine economic analysis with the management of public and legislative outreach.

### Research Resources

The Trade Partnership publishes a variety of reports including data updates (e.g., this monthly U.S. Export Fact Sheet), short Policy Briefs on topics of interest to The Trade Partnership staff, and research on behalf of specific clients. To ensure you receive all research updates:

Follow us on Twitter: [@TradePartnersDC](https://twitter.com/TradePartnersDC)

Sign up to receive all email updates: <https://tradepartnership.com/about-us/contact-us/>